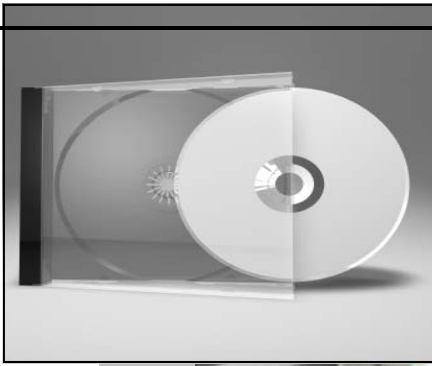


**Plastic  
Selection  
Group, Inc.**



**KOSTRATE® EDGE  
TERPOLYMER**

**“ T h e C l e a r C h o i c e i n P l a s t i c s ”**



# KOSTRATE® EDGE

## Processes

- Injection Molding
- Profile Extrusion
- Injection Blow Molding
- Injection Stretch Blow Molding
- Extrusion Blow Molding

## Replacing

- |                |              |                 |
|----------------|--------------|-----------------|
| PC             | Eastman PETG | Tritan™         |
| Impact Acrylic |              | Rigid Clear PVC |
| Clear ABS      | ZYLAR®       |                 |

## Markets of Opportunity

- Office Furniture and Accessories
- Cosmetics & Personal Care
- Storage Products
- Major and Small Appliances
- Infant Care
- Dispensers
- Point of Purchase
- Sports Water Bottles
- House wares

## Key Performances

- NO DRYING required
- sparkling clarity
- lower density
- easy to process
- practical toughness
- colors and decorates
- sonic welds
- good dishwasher performance
- good chemical resistance
- alcohol resistant
- FDA compliant

PLEASE BE AWARE THAT THE ABOVE INFORMATION IS BASED ON LIMITED KNOWLEDGE AND MAY BE SUBJECT TO CHANGE BASED ON SPECIFIC APPLICATION REQUIREMENTS. PSG CANNOT GUARANTEE THESE PERFORMANCES. ALL CUSTOMERS SHOULD TEST MATERIAL PRIOR TO USE.

# STANDARD INJECTION MOLDING GRADES

General Description	Units	LE	SE	ME	HE	MAX E
<b>Physical</b>						
Specific Gravity	psf (lb/ft <sup>3</sup> )	1.08	1.06	1.04	1.02	1.01
Melt Flow	g/10min.	4	6	8	10	11
<b>Mechanical</b>						
Tensile Strength Break	psi (lb/in <sup>2</sup> )	8,000	6,500	6,000	5,500	3,600
Flex Modulus	psi (lb/in <sup>2</sup> )	450,000	380,000	320,000	270,000	260,000
Flex Strength Yield	psi (lb/in <sup>2</sup> )	16,000	12,000	9,000	6,500	5,500
Elongation	%	8%	30%	120%	200%	>200%
Hardness	Shore D	82	80	75	70	65
Dart Drop Impact 0.125 x 2.5" disk	ft lb/in	5	18	25	35	>40
<b>Thermal</b>						
HDT at 66 psi - unannealed, .125"	Deg, F	210	200	190	185	180
<b>Appearance</b>						
Haze	%	0.5%	1.0%	1.0%	1.5%	1.0%
Light Transmission	%	93%	91%	91%	90%	90%
<b>Other</b>						
Mold Shrinkage	in/in	.003 - .006	.003 - .006	.003 - .006	.003 - .006	.003 - .006
Dishwasher Test	Cycles	300-500	300-500	300-500	300-500	300-500
Drying	Hrs - °F	NO	NO	NO	NO	NO

All information has been given for informative purposes only. Although the information is believed to be reliable, the data is provided without implied warranties of any kind.

## Special Grades

- ✓ Additional Kostrate® Edge grades are available and can be custom tailored to fit the needs of your application

### Drying

- ✓ Kostrate® Edge DOES NOT need to be dried prior to processing, with the exception of the Blow Molding process.

### Color

- ✓ All grades can be supplied in a range of standard colors or matched to your special needs

### Chemical Resistance

- ✓ Specially developed formulations are available to highly resist chemicals

### Antic Static

- ✓ Formulations are available to provide protection against dust pick-up and static generation

### UV Package

- ✓ The addition of a UV package is available if needed

# STANDARD EXTRUSION/EBM MOLDING GRADES

## Bottle Grades: IBM/ISBM

- ✓ Kostrate® Edge High Rigidity
- ✓ Kostrate® Edge High Rigidity Modified
- ✓ Kostrate® Edge 6535
- ✓ Kostrate® Edge 6535M
- ✓ Kostrate® Edge 7030
- ✓ All Extrusion/EBM Grades

General Description	Units	MASTER Tough	BMBT	HIGH Rigidity	HIGH Rigidity Mod.	HIGH Rubber
<b>Physical</b>						
Specific Gravity	psf (lb/ft <sup>3</sup> )	1.01	1.02	1.02	1.02	1.01
Melt Flow	g/10min.	4	4	2-4	2-4	11
<b>Mechanical</b>						
Tensile Strength Break	psi (lb/in <sup>2</sup> )	4,500	4,500	5,000	4,000	3,700
Flex Modulus	psi (lb/in <sup>2</sup> )	235,000	235,000	270,000	220,000	
Flex Strength Yield	psi (lb/in <sup>2</sup> )	5,000	5,000	5,500	5,500	4,500
Elongation	%	250%	100%	45%	220%	>300%
Hardness	Shore D	69	72	74	75	68
Dart Drop Impact 0.125 x 2.5" disk	ft lb/in	N/B	N/B	>30	>40	>40
<b>Thermal</b>						
HDT at 66 psi - unannealed, .125"	Deg, F	175	185	180	175	180
<b>Appearance</b>						
Haze	%	2.0%	1.5%	1.0%	0.5%	1.0%
Light Transmission	%	90%	92%	90%	93%	90%
<b>Other</b>						
Mold Shrinkage	in/in	.003 - .005	.003 - .006	.003-.006	.003 - .006	.003 - .006
Dishwasher Test	Cycles	300	300	300	300	
Drying	Hrs - °F	NO	NO	NO	NO	NO

All information has been given for informative purposes only. Although the information is believed to be reliable, the data is provided without implied warranties of any kind.



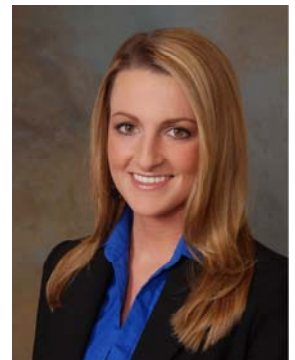
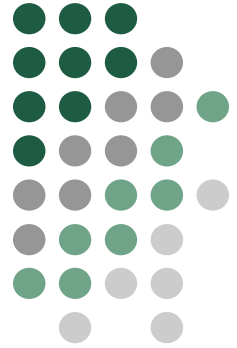


**Plastic  
Selection  
Group, Inc.**

*"Your Partner in Developing Material Alternatives"*

Our mission at *Plastic Selection Group, Inc.* is to be a profitable and valuable partner in material selection and development for plastic manufacturers, component processors and end-users across the globe.

We offer cost-saving, custom-resin formulations that fulfill the requirements of your specific application



### **About Plastic Selection Group, Inc.**

PSG is an application engineering and polymer chemist group whose decades of combined experience have led to the development of Kostrate® Edge as part of a broad offering of clear materials. PSG consults with you on a local basis while providing access to a world of sourcing options.

You can learn more about Kostrate EDGE and PSG by visiting our web site, [www.go2psg.com](http://www.go2psg.com). You will find data sheets, pictures, testimonials and **much, much** more.